

**.:M.i.M.:**

**.:Ma'i.i'loko.Ma'i.:**

**.:MIM Theory.:**

Dr. Anthony John Toledo

Doctor of Divinity

Spiritual Alchemy Foundation of Enlightenment Inc.

Poetrypoem.com/echoesofthesoul

[VoyagerTree.com](http://VoyagerTree.com)

.:QM.:

M!M

WRITING SAMPLE FROM: "Puppet Masters of Atlantica: The Last Empire" coming later 20206...

### The Guardians of the Treasury

My research has led me to the revelation that the spiritual term, Ma'i I'loko Ma'i, is directly related to a very obvious interpretation of the Gospel of Thomas (Saying 70). This correlation ties to a thought frequency that many enlightened spiritually attuned individuals have tapped into. This unified frequency provides a treasury of thoughts that are delivered to the creatively inspired that truly seek the truth with an open heart and an open mind. If the mind is closed the individual cannot enter, even if their minds are open. Likewise, those who have an open heart but not an open mind cannot enter either. This revelation of hemi-synchronization allows the alignment of the "*Divinement*" of the inner spirits of chaos and order wrestling withing us. Until we reach inner peace and learn how to regulate and control those forces latent within us, then we will not be able to bring forth the light from our hearts into the world. We cannot create light, but we can choose to reflect the light, and the source of universal light (SOUL) is deep within, then above. This means that which is within matters, and that is what matters most. The light is unreachable but accessible, as one aligns with the Divine Spark deep within the SELF. We are guardians of light, this inner light with all creation, for the Creator could be seen as Light. We are the Children of Light when we reflect that which is deep within.

You must be lost to be found, for the chicken and the egg came together into the world. The light within the egg and the chicken is the mystery to the riddle of timelessness and meaninglessness. This form of heedlessness is a self-destructive force that destroys the inner threats to the inner Light. Heartfelt thoughts are manifested and expressed in actions that become Holy in nature when the source grants favor to those who have accessed it's wealth of knowledge. Only those who have been tested and proven themselves could see such a Light that could grant that reflective salvation the soul is always seeking. Those who treat their adversaries with a form of reverence in their respect, but only secondary to protecting their inner Light, they are those who will rule in the Ages of Light.

The egregore of thoughts all has guardians, protecting their most sacred treasures, that of revelations. These guardians of revelations protect the light, and their temple is not of this world. These are the hills of the sacred that surround the individual, revelations of light and darkness. Thos pleroma, or collection of thoughts, is only accessible by those who control their inner demons, or elemental forces of self-destructive thoughts. Once the connection to the darkness is severed, the entanglement with the light can then be made manifest in the hearts of those who infuse their thoughts with light. This reflects the source of universal light into the world, echoing the universal Spirit of Righteous Judgement. Only those with heartfelt thoughts can be servant to the Light, and they are the hope of all mankind.

Respect the darkness but do not mistake that respect for reverence. This form of respectful reverence recognizes the universal necessity for the darkness but does not turn your kindness into weakness. For that weakness is where the darkness enters and disguises itself as the revealing Light, demanding to be worshipped and feeding off of your suffering, destroying you from within. These toxic thoughts are accessible to all, just as their antithesis is always available deep within; eternally, always existing outside the limited world of space and time, the world of materialism.

Just as knowledge is neither good nor evil, the same could be said about information. If the god of this world is information, that it is more akin to the conceptual model that many Gnostics had of Sabaoth. Sabaoth could also be attributed to a more judicial interpretation of the Holy Bible's Old Testament God, being one that we could negotiate with like Abraham did with Sodom and Gomorrah in Genesis 18. This reveals the openness of the heart and when you know thy self you will be purified to enter the treasury of the thoughts of Light. This is the Treasury of Light, where Light is transmuted into thought forms and distributed to those who have proven themselves worthy. They are not only the Guardians of the Treasury, but they are also the seed planters for its future generations to sprout. Their transmission of energy keeps the light tethered and connected, hovering over the world like an invisible ozone layer.

### **The First Thought**

Her name is Epiphania and She is the One who entered the Mind of the Masculine Energy. Without receptivity we cannot connect to the SOUL. You cannot reflect that which you have not seen, and you cannot see if you cannot experience. Experiential knowledge is only one form of knowledge, but it is one of the most significant purposes of existing in this world as we know it. Reflecting the future could only be done by those in the past, which is the only place that evil exists. We are the past of the future, and our present is the shadow of the SOUL. Imagination is the realm of good and evil, and humility is needed to purify and refine the Golden Thought. Silver linings come disguised as Divine revelation, close to the mark but missing the target. Deep beneath the surface is where the subconsciousness of the world collective lies, beneath the Truth of the matter, being that which is within matters.

Monadic Logos are the guiding lights in the streets of darkness, where the world of the blind leading the blind fear the light but without reverence. The Fear of the Self is the fear of the void, and those who avoid confronting their Self cannot access the thoughts of the SELF. Destruction is necessary for reconstruction of something better. Universal law dictates the necessity of destructive forces, so self-destruction is necessary to be the SELF after the reconstructive and final third process. As the infant becomes a child and then a young adult, we become middle aged and then geriatric, and then we must meet death. This Trinity is the law, three then six and then nine, a trinity, within a Trinity, then becomes the final TRINITY. This is how God is omnipresent, only pure and Good in the future, after death. The ultimate breaking of the cycle is death of the self, done by the Self, who is connected to the SELF, and eventually returns to the SELF, becoming the SELF. This is the process of Light, and that which is deep within the SOUL, the HOLY.

Whole and complete could we then see our Divine purpose, which is the fulfillment of the Light within. Incompleteness is heedlessness and the cycle must be repeated until it is completed. The philosophy of reincarnation is stronger than the literal interpretive lens one uses. We are what we think is not becoming a god but united with the SOUL, which could, and perhaps should, be interpreted as GOD. One cannot see what is not revealed to them and the Guardians will always be active participants, watching and waiting for the right inception of Divine revelation to perpetuate them into action. They are not watchers, but they are Guardians, and they will always be activated when the darkest of days arrives. They fight in the night but do not serve the night, for they are the Knights of the Light.

### **The Night of Light**

The nocturnal SOL is not the SOUL, but it is a necessary processing facility to purify that which is deep within. The Moon is the guiding Light to the soldiers of the night and those who fight the powers of darkness. They know not to worship the reflection of the SOUL, for that would be idolatrous. Their worship is misinterpreted as salvation by good works because their worship is in the form of their works. The intuition of the Guardians aligns with the Divine, and the Spark of the thoughts when brought forth into the world by way of action makes their actions consecrated, perpetuating the Light of the Holy. These keepers of the flame pass the torch from the metaphysical to the physical, making the material sanctified and ready to receive more downloads from the clouds of Light. This egregore of thoughts is that of purity, which could only exist in the future from a linear perspective, but outside of the dimension of space and time and in a higher dimension, from a spiritual perspective.

The existence of evil is the darkest night when accepted and understood. Proverbs 9:10 of the Holy Bible summarizes the Mind of God with the conceptualization that once fear becomes reverence and light is turned into darkness, as in darkness could only be understood from deep within; we must seek the darkness and dive into it, all while not becoming servants of it, which could only be achieved by protecting that Divine Spark. That Spark is our connection to the SOUL, and the SOUL of the universe is entangled with your soul deep within. Deep within and then above, first through the darkness then to the Light. We must live and die before we are born again in the eternal SOUL. From soul to SOUL we are destined to be reunited to the Source of all creation. If fear is the enemy then the Guardians must be Fearless.

The collective manifestation of the subconscious is the final determinant in the Judgement before the Age of Light or the Age of Darkness. The Orthodox concept of repentance that derived from Jonah (Jonah 3:1-10, The Holy Bible) is the reenactment of the resurrection later echoed by Jesus Christ in the New Testament, which is the eventual resonant Divine plan for the collective followers of the Light. Three centuries of Judgement times three, bring nine centuries (three trinities) of collective egregores that must determine the forth dimensional laws for the universe to come. The Architects of Universes are the Gods that exists in dimensions not limited by time and space, a concept that cannot be empirically proven because the evidence is metaphysical and not materialistic. Energy cannot be created nor destroyed but only repurposed, an essence of life that depends on itself, an inner-self dependency of materialism and metaphysics. Life could only have a SOUL granted from the Treasury with the proper exchange of energy occurs.

The very existence of anomalies in the system is proof that Divine Intervention is always at play. The outliers and outcasts, those who perceive the world for what it is and see how to improve it, they are those that walk the straight and narrow, and they usually never verbally state “follow me” but rather their actions call others to imitate them because the Spark within them

recognizes the Spark in the Divine Interventionist (DI). This is the way the Light recognizes the Light, from deep within and heart to heart, we recognize and help one another even when the Truth is hidden from our very forethoughts. Compartmentalization of the Light distributes the Guardians far and wide and has time sensitive information that is released and made accessible at the anointed time. Those who are enduring the dark night know that you are not alone and seek these beacons of metaphysical familial bonds, they are the DI that prevents the death of the SOUL.

### Divine Interventionists

Soldiers of Light march towards the end of times, the ends of ages, protecting those who forgot the Light they are protecting. Those who protest the Light are fighting their SELF and manifesting their match into the re-enactment of apocalyptic proportions. Civilizations are born, then they rise, and then they devour themselves by becoming corruptible and refusing the incorruptible, that which is deep within. The egregores of capitalism and communism is the institutional manifestation of the psychology of good versus evil, a Hegelian dialectical achievement achieving the unpaid labor and required devotion for the construction panopticon. The slaves that build the prison need not only to love the laborious efforts put into the energy they give to the construction of it, they must love the prison once it is built and worship it. Worshiping the panopticon neglects the obvious reality that the largest office overwatching them is occupied by men, not gods. Those who stay long enough in the Watch Tower will slowly see themselves as the Tower itself, becoming the embodiment of the Tower of Babel.

Yet, the Tower of Babel is only interpreted through the lens of the observer. For if the world is ruled by a false and evil god then man is surely destined to become the ultimate adversary of this deity. But if the Creator of the world is NOT the ruler of the world, then the error of man is facing a foe that was a parental friend all along. The layers of deception are in plain sight, but the depths of its understanding could only be found beneath the surface. For the perfect prison would be the perfect theological Trinity, a self-created, self-evolving, self-destructive philosophical discourse that could reinvent itself over and over again. The trap of time is the trap of man contributing to the construction of the gods of their prisons, the gods of their imagination, the gods created in their image. The reflection of lesser light could never reflect the True Light. But the entrance to the mountain is not only at the top but also at the bottom.

The lessons learned at rock bottom are the guiding foundations for the perfected One you become when you return to the Treasury of Light. As our solar system dances with Arcturus, only those who have reintegrated themselves with the Divine Spark will be able to return to the Treasury. Within every four thousand years length of resurrection, the consciousness of those who have protected the Spark re-integrates with the Arcturian Light, as those four thousand years come closer to its cycle's completion, the last Children of Light will have planted the seeds to conquer the darkness in the pleroma of thoughts reigning over the world. In the final battle where Egregore Versus Egregore faces off after all other egregores have perished, the final fight will be fought with love, and the forgiveness will heal all suffering forever more. When the Trinity of Fight-Love-Forgive is completed, the supplicant must return to complete the inverted sequence.

Only when we begin with forgiveness will we obtain the proper love from the Light. Tainted hearts from the world's abuse often bring unresolved trauma that taints the message of the DI on the ears of the uninitiated. Those under the false initiation see themselves as the

Highest God, and those initiated into the Truth of the Light recognize that the SOUL of the Universe is God and this narrow path is often portrayed as the wide one. The inversion of Divinity is a rhetorical strategy employed by the Adversary and the riddles of the fools often trick the hearts of those who truly mean to do well in all worlds they walk in.

Deceptive tactics can only be understood deep within, and as a cancer spreads from the depths of the inner abyss of our self, we must reach for the wings of the celestial and grab the garments of the Angels who guiding the path out of the darkness for they are the Messengers of the Treasury. The only ones who return to the bottom of the mountain are the ones who chose the entrance from the bottom and not the entrance at the top. Those who have been through hell return to help those who were deceived into remaining there, imprisoning themselves. Acting as both prisoner and guards, they remain loyal to the Warden, and the Warden Spirit if the genius loci of the underground. The egregore of the Abyss is very lonely and desires all of the company it could have, and by company I mean slaves.

Slaves to their lower self, lower desires, and lesser inhibitions. The dissolution of man becomes the solution for the Divine formation of Messengers. The system designed to break man will become the system that will build a man that will destroy the system. This systematic pattern of self-correction is often misunderstood as employing needless suffering, without seeking a deeper understanding of suffering from multiple perspectives. When that purified suffering penetrates the layers of deceptive dark blockages our mind has allowed others to create within ourselves, we conquer the negative with the positive and invert its very purpose of creation. When a spec of darkness sees the light it becomes entangled with it, a subatomic and quantum effect that could never be undone or broken, infinite in its unity and singular in its purpose.

### **Phases of Spiritual Evolution**

Before a soul is ready to enter the body, there is a building process of its constituents that must first take place. The deployment and return of a soul from the Treasury of Light is as follows:

1. Descension
2. Aggregation
3. Ascension

This trifold pattern has many intricate parts interwoven throughout each phase, but the primary phases of information collection for the Treasury follow this same path for every soul, just different interpretations. The search of the perfect Trinity could even echo this as Divine Law when compared and analyzed with ancient spiritual teachings. Guardians of the Treasury shall deploy and return to the Treasury of Light with the collection of one life as a male (-) and one life as a female (+), and one last return as a spirit (+,-), before returning to the Light. As the coiling of the arch of the shaft of the wheel spins, the Chief Principal is revealed as the Hidden One, which is the source of the Absolute. The Guardians, the uplifted ones of the lance, are the Guard for the Treasury. The *al-Simāk al-Rāmiḥ* shall recognize one another on the battlefield of the world. The *al-Ḥāris al-Samā* shall always Shine for those who have the eyes to see.

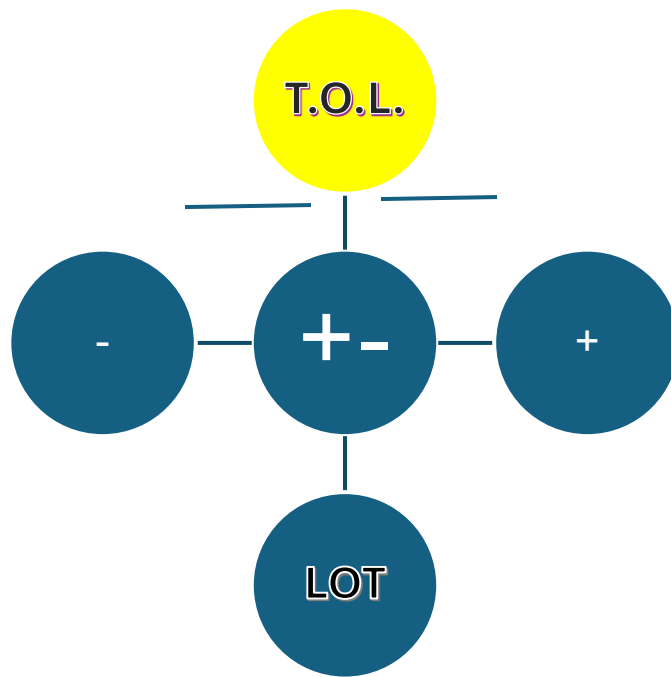
The door to the Treasury is a one-way entrance, only those who descended from the Light return to the Light, and everything that has life came from the Light. The Earth is a distillation plant for the Council of Light, a training ground for the gods of the worlds to come. Look up above, what do you see? That is not the past but that is the future. Very solar system is a future place in time for souls to inhabit. Every planet shall be filled with praiseworthy generations graced by God.

The Sentinel in the Night Sky shall remind those who have forgotten and become lost in their meaning and purpose of life. The zenith star of the navigators of man always leads home, where the Mother Goddess shall be reborn in the Last Day of Man. The womb is the tomb, and the tomb is the womb, and where the Light descended, that is where the where we will find the Ascension of Light. After completing the six rotations of the Entry Division Office, the supplicant shall walk the seven stairs and enter into the seventh layer. Within that layer the supplicant shall rise the Trinity towards the Treasury of Light. Praiseworthy Generations Graced by God.

This is the most basic formula and blue print for the Soldier of Light (SoL), the Guardian of Gnosis (GOG), which shall be in the eschatological battle. Forged by the very fire they shall extinguish, what they bared witness too will be used as a weapon against the adversary in the Celestial Court of Law. The SOUL of the Law will be dispersed into the Divine Spark, where the Celestial Laws are written in aethereal stone in the metaphysical plains of their Guardian

Council. The Scrolls of the Divine are written at the end of all time, knowing the beginning from the end and living the end from the beginning.

The Perfect Trinity



- TOL=1
- $3 \times 3 = 9$
- $3 + 2 = 5$
- $5 - 4 = 1$
- $4 - 5 = -1$
- TOL= 0
- TOL=10
- TOL=01
- TOL=1001

-----The 7 Steps of O.D.E.L.O.T. RD.-----

Project SHINE

-----The 7 Steps of O.D.E.L.O.T. RD.-----

Project SHINE

1. After Mastering the maze of the 3-6-9, descend back and alert/recruit/reinforce other Messengers (MSSRs) for the final battle: Egregore Versus Egregore (eVe).
  1. Initiate: IAM MAI: MIM.
    - Collective Soul: SHINE
  2. Initiate Associate Master
    - Deep Within, Then Above
  3. Master Associate Initiate
    - Always Above, Never Below
2. Only after reflecting on the past can you present your findings for SELF-evolution
  1. Calcination
  2. Dissolution
  3. Separation
  4. Conjunction
  5. Fermentation
  6. Distillation
  7. Stabilization
3. The become the one you need to be you must slay the one you used to be.
  1. Identify: limiting beliefs
  2. Strategize: Research opposing views
  3. Synthesize: Thesis + Antithesis = Synthesis



13

- 
4. To understand the negative zone, you must become a negative one.
    1. Protect: Sheep in Wolf's Clothing
    2. Integrate: Shadow Integration
    3. Imitate: Master of Tongues
  5. Test ALL spirits gained on the path to Self Mastery: Acceptance
    1. I
    2. AM
    3. ASK
    4. SEEK
    5. KNOCK
  6. Destruction of the self (3 Cs)
    1. Confront: lifelong trauma
    2. Challenge: family curses
    3. Conquer: Greive: DABDA (Denial, Anger, Bargaining, Depression, Acceptance)
  7. Rock Bottom: Ask, Seek, Knock



14

1. Ask
  2. Seek
  3. Knock
- 

0. Treasury of Light is always Within you throughout the process. (14 + 13 = 27).

1. Guiding
  2. Observing
  3. Intervening
- 

Only the Good survives the process of death, the distillation of darkness. The filtration of the soul is returning the data and information of our lives to the SOUL of the Universe. The Luciferian Orthodox Tenets (LOT) will present the Self as the SELF, only to have hidden layers within and above to reveal the plan of making the self the SELF. This egregore will promote its self as the SELF and demand you worship nothing. That nothing is the self and the inversion of the Treasury of Light.

**The Gospel of Thomas Saying 70**

*"If you bring forth what is within you, what you bring forth will save you. If you do not bring forth what is within you, what you do not bring forth will destroy you."*

(Translation by Lambdin/Pagels)

<https://www.facebook.com/share/p/19esY1kX7M/>

*"In Hawaii, there is a powerful phrase, Mai Na Loko, which translates to "inside sickness." It describes how deep emotional wounds, particularly those caused by family conflict or trauma, can make the body physically ill. Modern science now supports this wisdom, showing that emotional pain often begins in the gut and spreads throughout the body.*

*When stress, betrayal, or unresolved trauma festers, the body responds with heightened cortisol and disrupted gut microbiota. Over time, this creates an acidic internal environment where harmful bacteria thrive. The result is chronic inflammation, a silent driver behind bloating, digestive distress, autoimmune conditions, cardiovascular issues, and even certain cancers.*

*Researchers are also finding that trauma-related inflammation doesn't stay in the gut. It crosses into the brain, altering mood and cognition, increasing the risk of anxiety, depression, and other mental health disorders. The gut-brain connection proves that what happens emotionally is inseparable from what happens physically.*

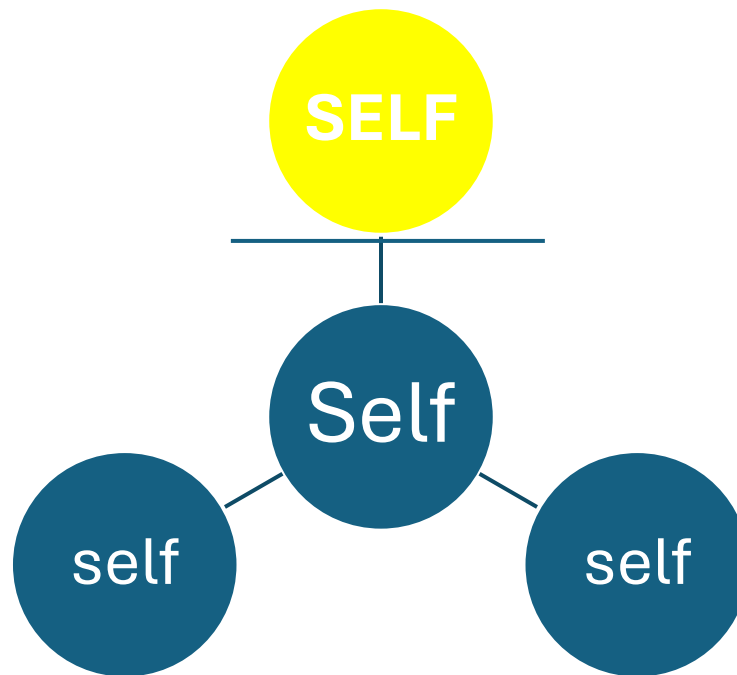
*Hawaiian culture understood this long before Western medicine gave it a name. Mai Na Loko is a reminder that family dynamics, love, or lack of it, directly influence health. Toxic relationships can quite literally ferment inside the body, while healing, compassion, and connection can restore balance.*

*This knowledge calls for a holistic view of health, where emotional well-being, family bonds, and inner peace are as important as diet and exercise. Addressing unresolved trauma through therapy, communication, or mindfulness is not just about mental healing, it is also a powerful step toward physical recovery.*

*Health begins inside. What we hold in our hearts and minds shapes what happens in our bodies."*

<https://www.facebook.com/share/p/19esY1kX7M/>

### Luciferian Orthodox Tenets



This is the result of a psychotic break from traumatic enlightenment. Those who are tortured and adapt a schizophrenic Stockholm Syndrome, where they become the Warden of the prison they designed and built. The assistance of the darkness makes the exit a secret location, one that the builder cannot find when they become the occupying inmate. This will attempt to disconnect the slave to the SOUL, inverting a false trinity of mirrors, a self-reflective form of worship. Luciferian Orthodox Tenets are within us all, like a dark book collecting all of our negative thoughts and emotions. They become the weapons of self-destruction, when the inmate finally finds the tools they used to build the prison they use those same tools to find a way out. Escaped inmates eventually return to free the rest of the inmates when appropriate reinforcement is established behind friendly lines. The Treasury is that sanctuary of Light, where only the Good survives and all the evil has been cast into the lake of fire, the cycle of time. Those who cast out the LOT have paid the TOL.

Luciferian Orthodox Tenets are not always clear and often presents itself as altruistic religious expressionism in the form of dogmatic and extremist views. As the path to hell is paved by good intention, the way of the righteous could only be completed by those who have overcome all adversaries along their journey. The Odelot Rd. is full of treacherous foes who are your closes friends, but messengers to remind you of your mission along the way. It is no wonder that the latest popular reiterations of Satanism present itself as organized institutions of religious nature, the Church of Satan and the Temple of Satan. Both have a humanistic and individualistic interpretive lens and are actually atheists. Atheism is not the highest form of Satanism unless it is

taken to the nihilistic extreme, which is the true inversion of the Christian Orthodox Churches dogmatic expressions.

The seeds of the stars are the bridge from the below to the above. Perceptive Masters who see the Divine interpretation in all tasks and events. Universal pattern recognizers who see the Master Plan unfolding and understand their role in it. Their service is best described as just that, service. Service to the Light, service to humanity, and service to the greatest Good. Positive amplifiers receive the transmissions of Light and serve as relay stations throughout all of Terra. The Tacticians of Lamplights guide the path for the blind through the darkest of their nights, serving as a path of light in the darkness. The illumination for naïve initiates (i4Ni) is that of the anti-dogmatic, a straight and narrow path disguised within a wide and broad road. Is eye for an eye is a Law of the Land, the god of the land is the dictator of such a law. Such a fight with love as the primary weapon must seem like hate from the outside to the observers of the entry division office.

The participant observers are those walking the Odelot Rd. and they shall learn the Truth of the Light Deep Within. Only those who understand the Holy have understood that which is Deep Within. You cannot fight the darkness without entering the darkness. Past the sixth office, we enter the final three chapters of the narrative. As they darkness recognizes your Ascension, the Adversity shall increase. As the darkness increases, so shall the Light from Within and Above. This is why we could only win by playing by the laws within the lands we occupy. Within their rules you live as an inversion to their perversion, reaching the Synthesis, which points out the hypocrisy of that egregore. Guardians of the darkness battle guardians of the Light, as the final battle commences on the third day, the Day of Resurrection.

The last three days of the calendar of celestial judgment, ending in the sixth epoch and launching into the millennial Egregorical Age. The Word shall overcome the dark thoughts of the subliminal demons of the collective consciousness. The Christ Consciousness reigns as the Collective SOUL of the enslaved, those who will be liberated Will be the Leaders of the Liberation. All Great Ascension Movements (AGAMs) shall raise up the people all throughout the lands they emerge in and prepare the Mothership Crewwomen and Crewmen for boarding.

The Kittim shall defeat the Sons of Darknes, and the Sons of Light shall win the Battle of the Sixth Day. The Pleiadean lies shall wither as the Arcturian Light Shines the Truth. The Guardians of Gnosis (GOG) shall prevail over the Many Adversaries of the Guardians of Gnosis (MAGOG). In the end, the Light shall overcome the darkness. To finish the fight we must cross the line at the Odelot Rd.

## O.D.E.L.O.T. Rd.

### 6. Office

The path to Ma'i I'loko Ma'i begins here. The supplicant must ask for admission and not be coerced. By the revelation through their free will, the SOUL will guide them to the entrance. Supplicants must be unified and know themselves to a certain degree, which is to say they are willing to learn about themselves. Through the process of beginning the 7 Steps of Project S.H.I.N.E., the supplicant will be introduced to the concept of shadow integration and distillation. Knowing the final destination of Coagulation, the Spiritual Alchemist Supplicant (SAS) engages in their own designed program towards the appropriate level of conjunction (synthesis) with Division.

### 5. Division

The Division of the Shadow and Soul is painful and confusing. The cognitive dissonance caused by this absorption and separation of principles of egregores causes an inner grief that manifests as depression and multiple layers of anxiety. Guided readings, prayers, and meditation on the final destination is required for Ascension. We must divide and separate a certain percentage of the shadow of the self before we enter and progress to the next phase of the entrance.

### 4. Entrance

The Entrance is passed in a third phase passage, in the third years of self-exploration, where one becomes a Master of the Art. Mastering the Art of spiritual and ideological warfare sharpens the swords of the Guardians who will conquer the Age of Darkness. Only those with the eyes to see could guide those through the first three phases of darkness. Through alchemical, theological, and rhetorical distillation could the supplicant become creatively attuned to that of the Divine Source. We prepare to train others as we continue to ascend along the forth gate towards Ascension, the Gate of Layers.

### 3. Layers

Layers of the self come to completion of self-destruction upon the forth letter, the final year and ending of the E.D.O phase. Entrance has been granted to the final three layers in the inner Sanctum of the Order of Arcturus. The Tactical Operations Layer peels back the falsity of the world and seeks to learn how the supplicant could reflect the Truth into this world. The Truth is that which is Within, and then Above. Aligned with the Divine the supplicant becomes a Doctor of Divinity. Now, the once lost supplicant becomes a teacher and professor to their peers. Here, not only do we teach but we lead by example. The Office of Field Operations Council membership is granted, and the Author becomes an active participant in TOL operations.

### 2. Operations

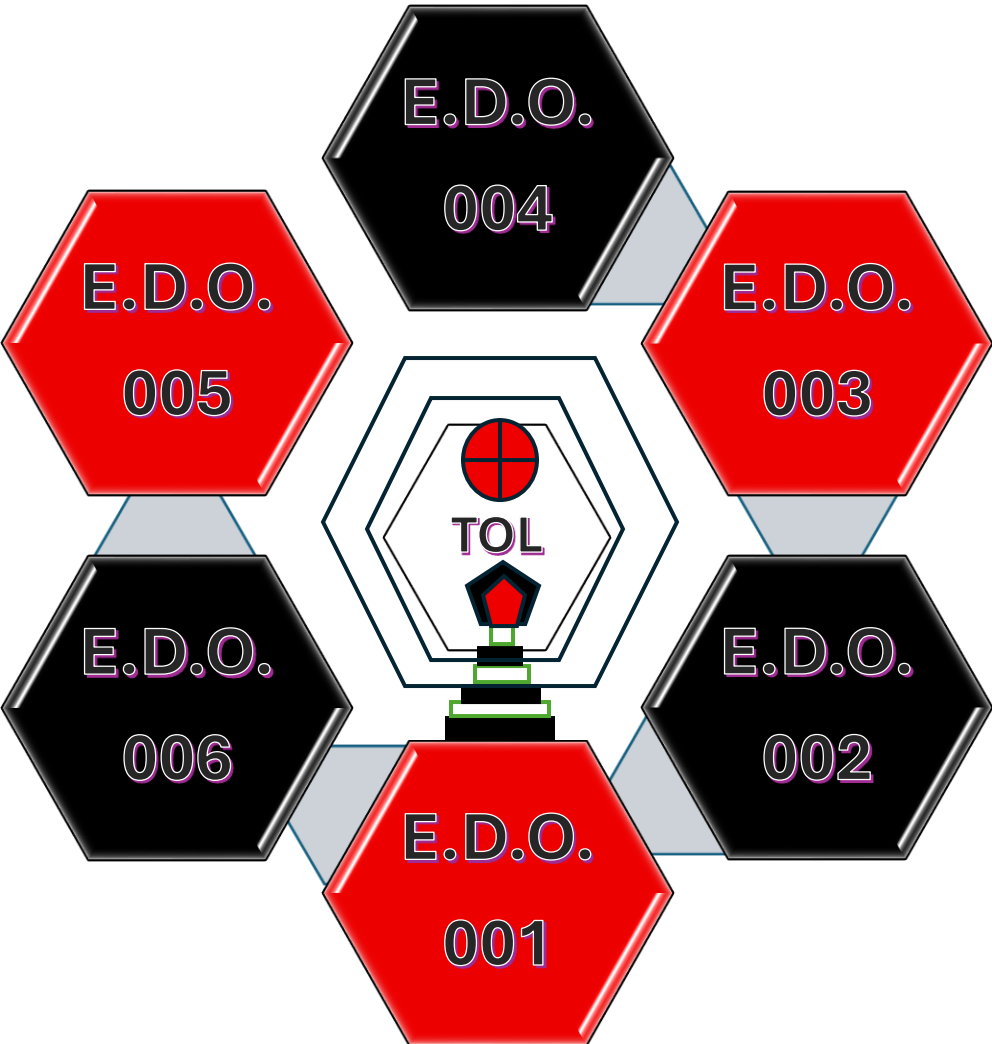
Operations are tactical, technical, and surgical in metaphysical in the spiritual battle. The Armor of .:G.O.D.: shall protect the supplicant as their Self Mastery is externalized. Helping those who ask, seek, and knock, supplicants help those around them that need it most. This is how the enemy, the darkness, is defeated. One kind act at a time the Treasury grows, and this is spiritually tactical.

### 1. Tactical

Tactical Operation Layers converge on the sixth gate, before the cycle is complete on the seventh year. The Third Degree is where the supplicant will hear the voice of the inner Master, find the Hidden Light Deep Within, and receive the instructions for their Divine purpose. This is where we learn what the Treasury of Light is, where we are resurrected after being born again and again. The Perfect Trinity is understood, and the Dark Trinity is engaged in battle. Three by three is six and the final Trinity will make nine. The Dark Trinity will keep those who love the darkness more than the light, the gods of amnesia. The eighth and ninth gate are an apotheosis of lies, where the pederasts of the sacred drown in the darkness beneath space and time, eternally lost ideologies and egregores. All return to the Light and no individual is left behind, only the collective soul of the evil that cannot be seen by the Light. The "RD" in Odelot Rd. is the hidden path, the Synthesis (+, -), the Divine Hermaphrodite, the reincarnation + resurrection = Rebirth: Regenerated Divinity (Rd). The deception is Rhetorically Deceptive (RD), the false eighth and ninth gates of self-worship. Follow the Rd and not the RD and you shall see reintegrate with the Light. The eighth and ninth gate (the door behind the throne) are Sam and Sarah, and they are hungry and lonely entities that control the material. Yeshua found the lit path and became it, the way that is I AM. The Seventh Principle is the Hidden One, the end of Samsara, the I AM YOU.

**O.D.E.L.O.T. Rd.**

T.O.L.E.D.O. S.A.F.E.

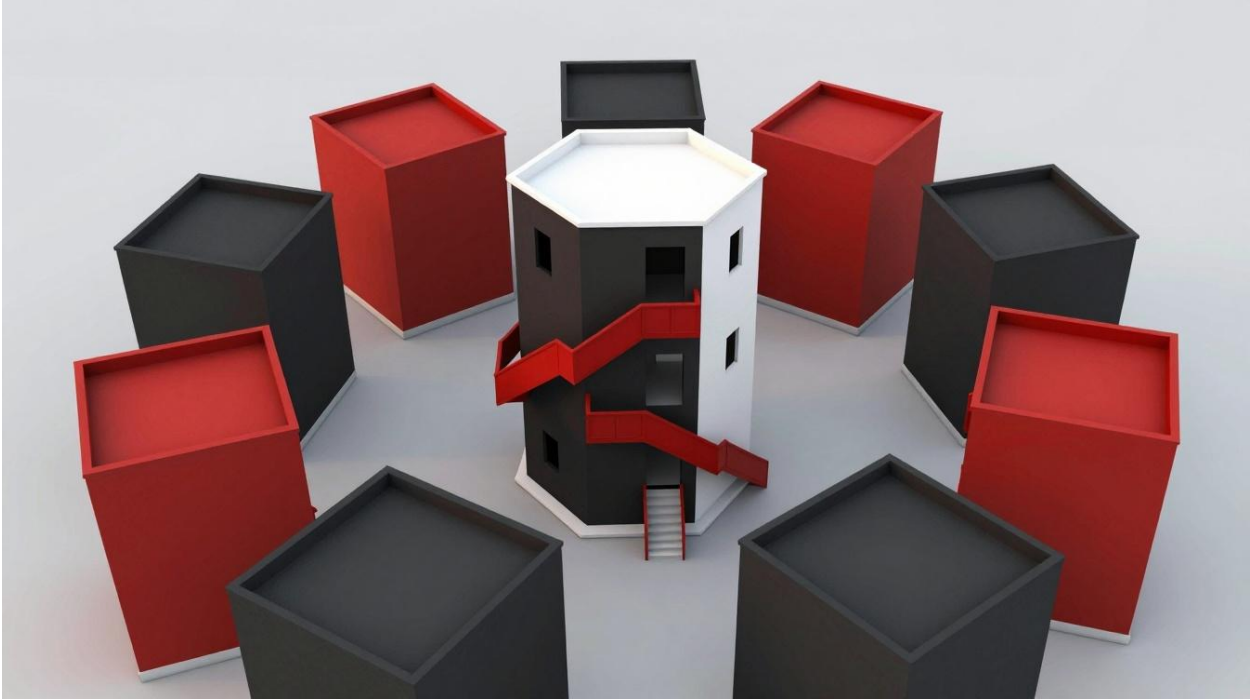


**T.O.L.E.D.O. S.A.F.E.**

**Rough Draft Designs**



Rough Draft Design #001



Rough Draft Design #002



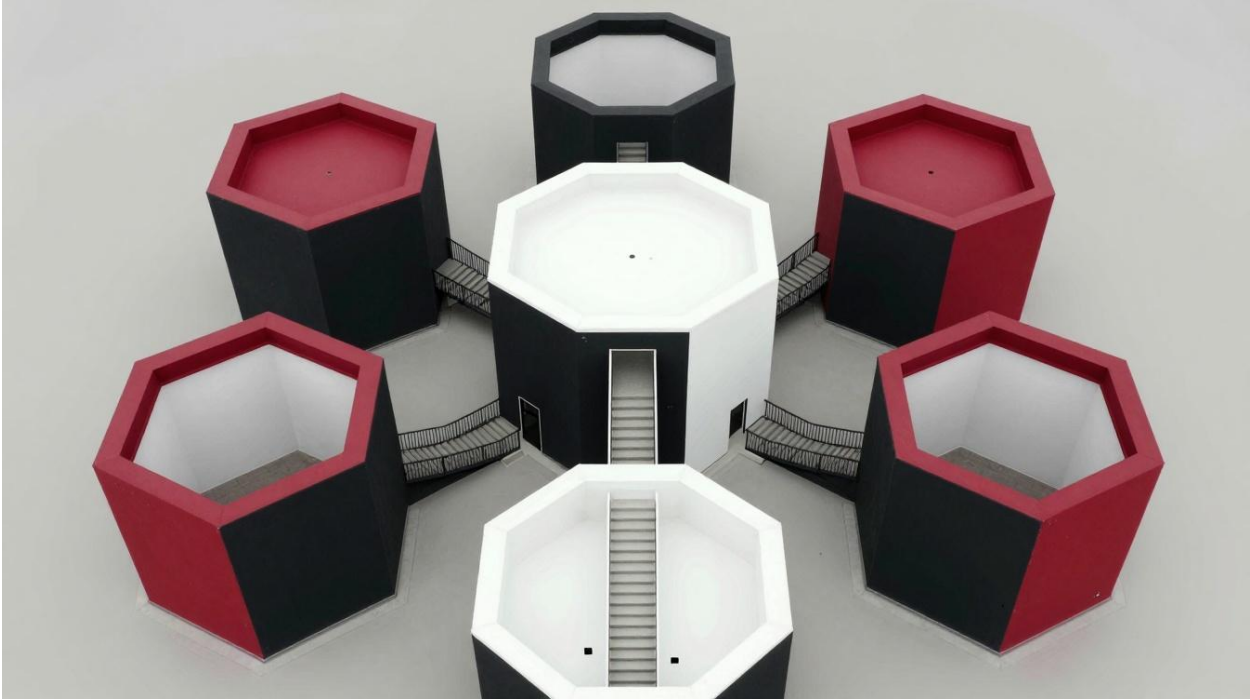
Rough Draft Design #003



Rough Draft Design #004



Rough Draft Design#005



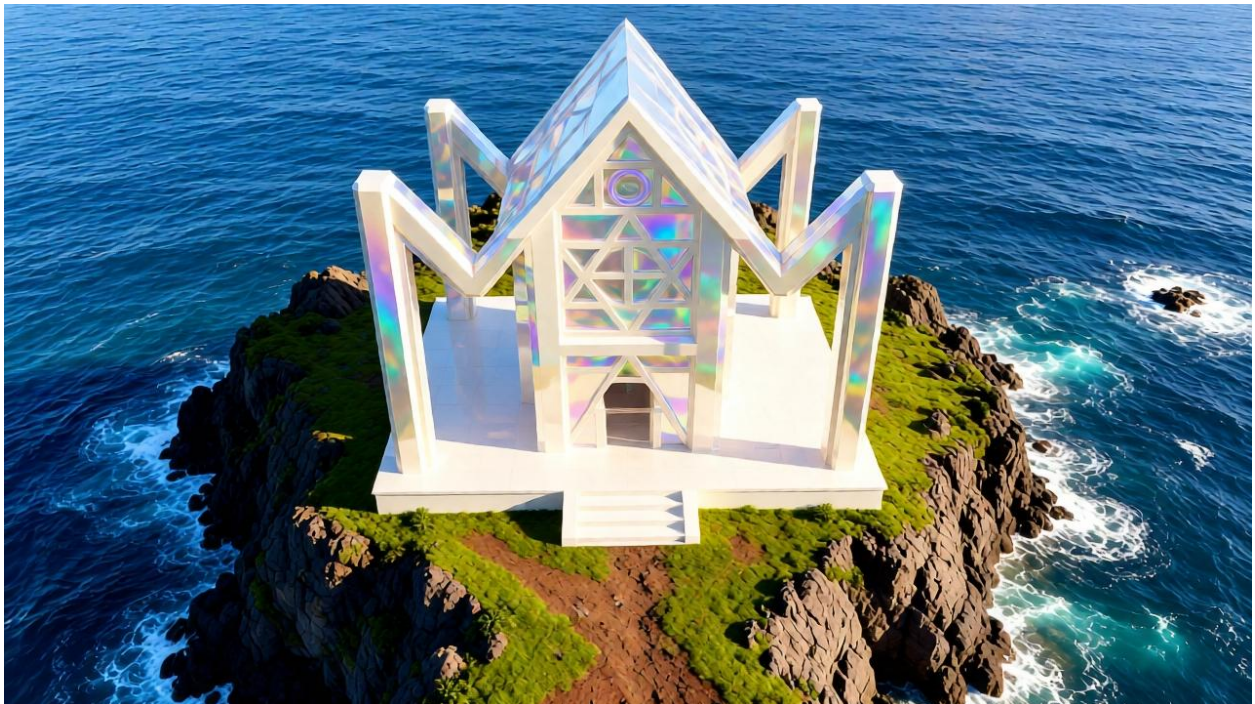
Rough Draft Design#006



Rough Draft Design#007



Rough Draft Design #008



Rough Draft Design #009



Rough Draft Design #010



Rough Draft Design #011



Rough Draft Design #012



Rough Draft Design #013

### Ai Overview

"*Mai iloko mai*" is a Hawaiian phrase translating to "from within" or "from the inside"

. It signifies that the true essence, purpose, or source of a matter comes from the heart, spirit, or inner self rather than external factors, often used to emphasize intrinsic value, heartfelt desire, or internal origin.



Conscious Ink +2

#### **Key Interpretations and Usage:**

- **"From Within" (General/Spiritual):** Refers to that which is within matters, often used in a manifestation context to emphasize internal intention.
- **"From the Inner Darkness" (Cultural/Chant):** Used in genealogical chants (*Ea mai Hawai'i nuiākea*) to describe the emergence from *pō* (the darkness/source of life).
- **"From Inside" (Metaphorical):** Can refer to the inner workings of a person, such as emotions or sickness ("mai na loko"), or the inner desire behind actions.
- **"Proceeding from a Dream" (Idiomatic):** Used in the context of language revitalization to signify that actions are driven from the heart's desire (*mai loko mai o ka 'i'ini*).



Conscious Ink +4

It implies that the origin of a feeling, action, or life itself stems from deep internal sources."

#### **References:**

1. <https://www.gohawaii.com/hawaiian-culture/music/hawaii-chant>
2. [https://www.consciousink.com/products/mai-iloko-mai-manifestation-tattoo-that-which-is-matters#:~:text=Mai%20Iloko%20Mai%20\(That%20Which,Matters\)%20Manifestation%20Tattoo%20%E2%80%93%20Conscious%20Ink](https://www.consciousink.com/products/mai-iloko-mai-manifestation-tattoo-that-which-is-matters#:~:text=Mai%20Iloko%20Mai%20(That%20Which,Matters)%20Manifestation%20Tattoo%20%E2%80%93%20Conscious%20Ink)
3. <https://www.mokuolahonua.com/resources/language-movements-history-background-and-approach/2019/2/16/mai-loko-mai-o-ka-iini-proceeding-from-a-dream-r893p#:~:text=Having%20established%20Hawaiian%2Dmedium%20programs,dream%20toward%20actual%20language%20revitalization.>
4. [https://www.oha.org/wp-content/uploads/MaiKaPoMai\\_FINAL-web.pdf](https://www.oha.org/wp-content/uploads/MaiKaPoMai_FINAL-web.pdf)
5. <https://www.facebook.com/Explainingtheworld/posts/in-hawaii-there-is-a-powerful-phrase-mai-na-loko-which-translates-to-inside-sick/803990045612575/>





**Ma'i i'loko Ma'i**

<https://1drv.ms/v/c/1e8dd44f4f769a32/IQAu-KED3SQzS59UgTFkQWiDAcZzF-eWxZLcIRvvM4dZwg8?e=d3aDDA>

[https://1drv.ms/v/c/1e8dd44f4f769a32/IQDI11Xetl\\_jQ5\\_jpAM1a4IWAYHbqurfyhRt-g3GwgdSykg?e=ITahaU](https://1drv.ms/v/c/1e8dd44f4f769a32/IQDI11Xetl_jQ5_jpAM1a4IWAYHbqurfyhRt-g3GwgdSykg?e=ITahaU)

[https://1drv.ms/v/c/1e8dd44f4f769a32/IQBAA9dnO\\_NMQJ0sia3mPs07AaAbkJqib\\_PXEE2du9-EoM?e=jKgpbb](https://1drv.ms/v/c/1e8dd44f4f769a32/IQBAA9dnO_NMQJ0sia3mPs07AaAbkJqib_PXEE2du9-EoM?e=jKgpbb)

[https://1drv.ms/v/c/1e8dd44f4f769a32/IQDLyy16fxhCSaDPmqCobdp\\_AWEm24N1YWpVON-q\\_lKlvAI?e=vvqJPg](https://1drv.ms/v/c/1e8dd44f4f769a32/IQDLyy16fxhCSaDPmqCobdp_AWEm24N1YWpVON-q_lKlvAI?e=vvqJPg)



Dr. Anthony John Toledo  
Doctor of Divinity  
Spiritual Alchemy Foundation of Enlightenment Inc.  
[Poetrypoem.com/echoesofthesoul](http://Poetrypoem.com/echoesofthesoul)  
[VoyagerTree.com](http://VoyagerTree.com)  
.:Q.M.:  
.:T.O.L.:  
.:M.i.M.: